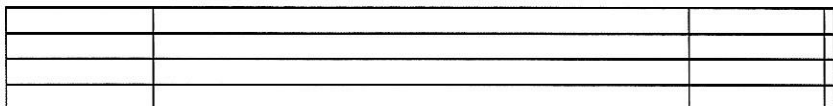


# LEVEL 3 WRITTEN TEST

Student Name \_\_\_\_\_ Teacher Code \_\_\_\_\_ Room Number \_\_\_\_\_

**1. Scale** (10 points total)

\_\_\_\_\_ a. Draw a bass clef on the staff.  
(1 point)



\_\_\_\_\_ b. Write the C Major scale.  
Use whole notes. (8 points)

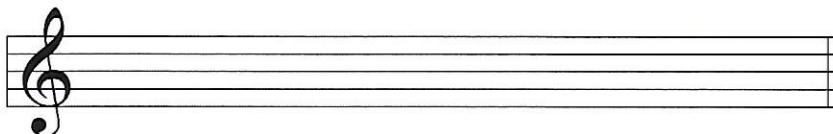
a. bass clef    b. scale - going up only

c. I chord

\_\_\_\_\_ c. Write the C Major I chord. (1 point)

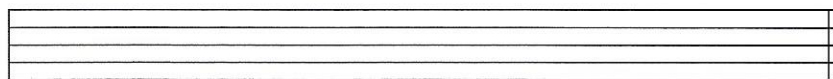
**2. Stem Placement** (4 points)

Add stems to these whole notes to make them half notes.



**3. Notes** (5 points)

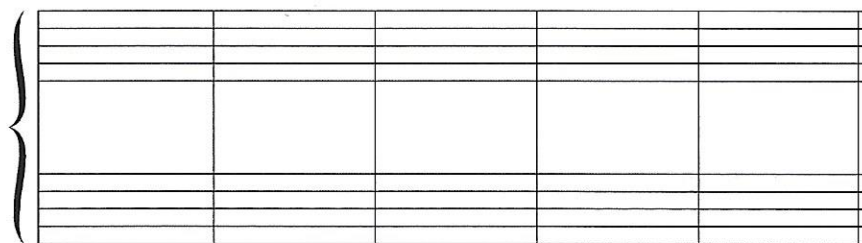
Name the notes.



\_\_\_\_\_

**4. Intervals** (5 points)

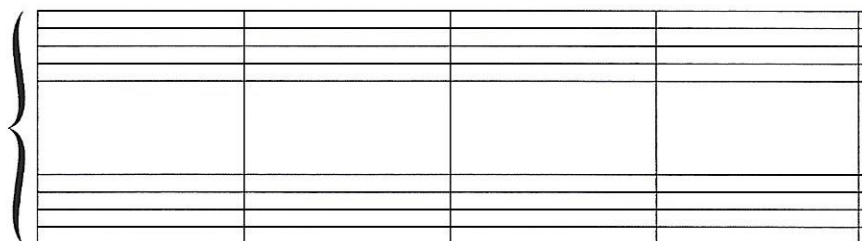
Name the intervals.



\_\_\_\_\_

**5. Chord Roots** (4 points)

Name the root of each chord.



\_\_\_\_\_ Total points from this page (28 points)

\_\_\_\_\_